

201



中国中铁股份有限公司
CHINA RAILWAY GROUP LIMITED

T e B a d f D e c a d a d e c f e C l p a a a e e a e e f a e e c d,
L e e a d a e l e l a l l e e e p a d e e b e a d d a a d d
a b e f e a e e c a c c a a d e e f e c e .



" " " CREC"

" "

Te ... ed f eC ... eabbeta ... fcl pa ... al e "CREC" a d eE ... abbeta ...
"CREC", ad p ... b, ec ... a l b ... e ec ... a dal b ... a e a da d c ... Te bac ... d
f e ... be ... l e da a da ... de ... e ... d ca e ... ec l pa ... ba a d ... a e ... c ... Te
... p ... a d ... d " ... " ... e a ... da, ca ... e ... e ... a d ea ... , b ... a ... e
... a b ... d ... l ... a ... a ... f ... e.

Abstrakt Rep

2016

Wecle ead Sga Rep b, Rep, 2015 fC, a Ra a G, pLl, ed.

" " " " " "

l de fag, ae ead C, a Ra a G, pLl, ed, ep ee pe edb CREC, e Cl pa ad e/, ec.

2016 1 1 12 31

2016

T rep e e cl pa a a ga ep b, ep e e le pa f1 Ja, a 31 Decel be f2016, l a f c, e e ab, l a a e e pe acc d, a, e - a e ce, be efi cea, aff de e ple, afe pe, ce ce & ec p e, e e a p ec, p b, e fa e, de a, e c pe a ad e ea ep b, ec d, e ea f2016, d ea e e a, fcl pa f f e ga ep b, be f e 2016.

" " G ba Cl pac
GRI
SAI GB/T36000-2015
GB/T36001-2015
T36002-2015
CASS-CSR3.0

GB/

We pe pa ed e ep b e fe e "e p c pe" p l, e ad b e U, ed Na, G ba Cl pac (G ba Cl pac), e ee a a da d f e G ba Rep, e l i a e (GRI), S ga Acc, ab, l e a a (SAI), C, e e Na, a Sa da d GB/T36000-2015 S ga Rep b, G, de e, GB/T36001-2015 S ga Rep b, Rep, G, de e, GB/T36002-2015 S ga Rep b, Pe f l a ce Ca fca, G, de e, C, a CSR Rep, G, de e (CASS-CSR3.0), G, de S ga Rep b, f C, e e l e a a C ac a de e a e, d e f e SASAC, S a S c E ca e a d e S c E ca e f H K.

A ee a da a d ca e, ed, e ep a e f l e CREC a d, b da (ba c) cl pa e. T rep l a e al e cl pe e e a c e e f e cl pa a fa, c, e c, c, l e ca da a e l p ed. l f ee a ed, ee ce p e, ep, e ep a pe a.

T rep p b, ed, b C, e e a d E, l ca e fa d ce pa c be ee e e, e C, e e e a pe a.

T rep e e be cl pee, be ce a da c, a e a da c e e p e e l a c ce f e e e d pa e. l e e e p c pe f p, f e ce ce, e cl pa a c, l p ea d e f p e f e e f.

S ga Rep b, Rep pe pa a d p b, e e e a a d e f e a, a da e c l e, pp.

T ee c c e e f, ep, be p b, ed, e cl pa e b, e (c. ecc) a e al e l e, ca d ad a e e d e d.

Ca a e

Spec f Leade	02
C I pa Ve f Va e	04
Pa f S ga Re p b	05
I e e ed Pa e	06
C I pa P e	07
Ma a E e p e Acc d La	08
H-Q a Se ce	12
Be e Ce a	16
S a De e p e	20
Safe S pe	25
Sce ce & Tec P e	29
E i Le a P ec	34
P b c We fa e U de a	41
W -W C pe a	46
O e ea Re p b	50
Ope CREC	55
S ga A e I e	60
T p Te O a d S ga Re p b Pa ce	61
O	62



2016

" " " " " "

2016		500	57
500	296		3
	1	13	
19			

" " " " " "

2017

2017 3



Specif Lead

In 2016, CREC participated in the construction of a road project, which was completed in the first half of the year. The project was implemented in the area of the "13 Five-Year Plan" project, which is a key project of the "13 Five-Year Plan" project. The project was implemented in the area of the "13 Five-Year Plan" project, which is a key project of the "13 Five-Year Plan" project. The project was implemented in the area of the "13 Five-Year Plan" project, which is a key project of the "13 Five-Year Plan" project.

On the other hand, CREC also participated in the construction of a road project, which was completed in the first half of the year. The project was implemented in the area of the "13 Five-Year Plan" project, which is a key project of the "13 Five-Year Plan" project. The project was implemented in the area of the "13 Five-Year Plan" project, which is a key project of the "13 Five-Year Plan" project. The project was implemented in the area of the "13 Five-Year Plan" project, which is a key project of the "13 Five-Year Plan" project.

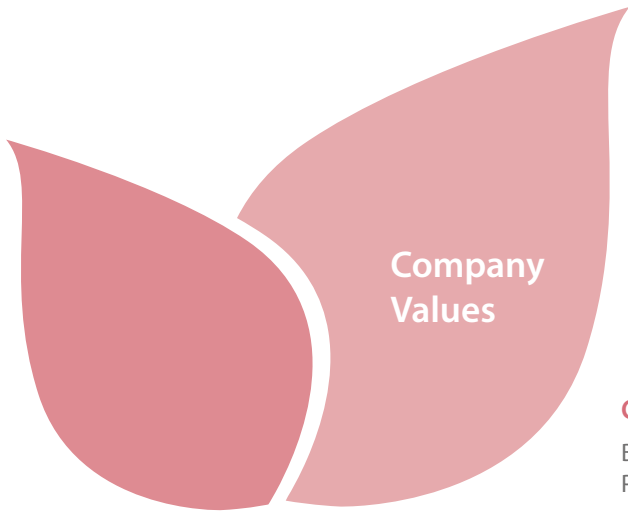
According to the project plan, the road project was completed in the first half of the year. The project was implemented in the area of the "13 Five-Year Plan" project, which is a key project of the "13 Five-Year Plan" project. The project was implemented in the area of the "13 Five-Year Plan" project, which is a key project of the "13 Five-Year Plan" project. The project was implemented in the area of the "13 Five-Year Plan" project, which is a key project of the "13 Five-Year Plan" project.

In 2016, CREC also participated in the construction of a road project, which was completed in the first half of the year. The project was implemented in the area of the "13 Five-Year Plan" project, which is a key project of the "13 Five-Year Plan" project. The project was implemented in the area of the "13 Five-Year Plan" project, which is a key project of the "13 Five-Year Plan" project.

In 2017, CREC also participated in the construction of a road project, which was completed in the first half of the year. The project was implemented in the area of the "13 Five-Year Plan" project, which is a key project of the "13 Five-Year Plan" project. The project was implemented in the area of the "13 Five-Year Plan" project, which is a key project of the "13 Five-Year Plan" project.

Call for Bidding: Call for Bidding, 2017





Company Values

企业精神:

Corporate Spirit:

Be a leader, do it right,
Pursue Excellence

核心价值观:

Core Value:

Head for the goal,
Candid and Sincere

企业宗旨:

Enterprise Tenet:

Integrity, Efficiency, Honesty,
Quality, Deeply

企业使命:

Corporate Mission:

Dedicated to providing
People Better Life

企业愿景:

Enterprise Vision:

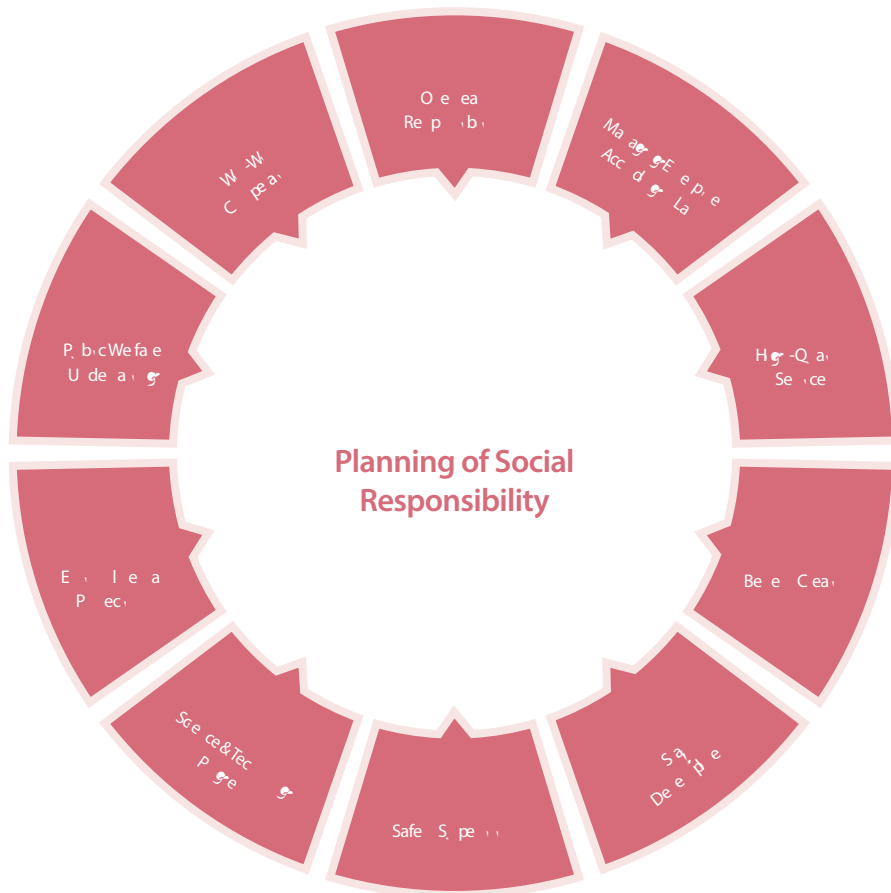
Lead China's development
in the world



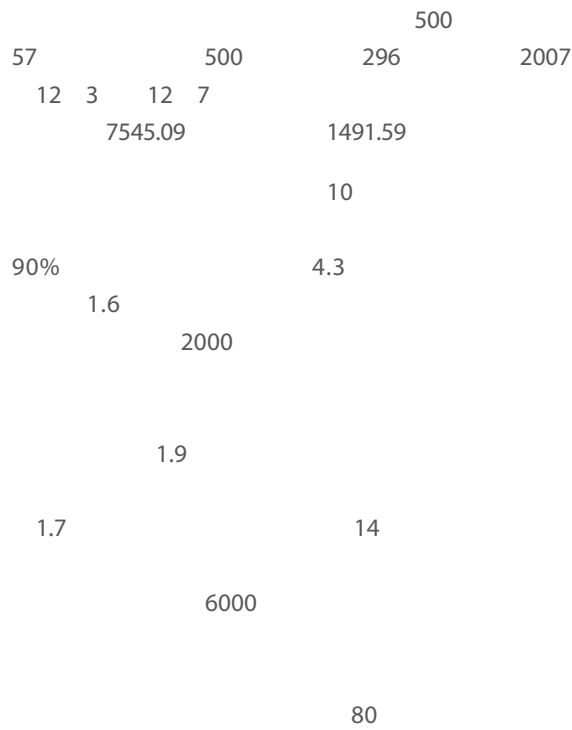
Plan of Social Responsibility

2008

A la eade... CREC... becl... pac... e, p... a... d... eade... f... C... p... ae... S... ga... Re... p... ib... a... l... S... ce... 2008... be... a... e... ab... a... ge... fic... a... da... d... ed... el... a... ca... d... effec... el... a... ag... el... e... el... f... c... p... ae... ga... e... p... ib... ,... a... d... pa... ed... ga... e... p... ib... f... l... e... a... pec... fl... a... a... g... re... e... p... e... acc... d... g... a... ,... g... -... a... e... ce... be... ef... ic... ea... ,... aff... de... e... p... e... ,... a... fe... l... p... e... ,... ge... ce... &... ec... g... p... g... re... ,... e... l... e... a... p... ec... ,... p... b... ic... e... fa... e... de... a... g... -... i... c... p... e... a... d... e... ea... e... p... ib... A... d... ec... l... p... a... a... c... ed... a... e... f... l... a... ag... el... e... pac... ic... e... f... ga... e... p... ib... f... l... e... cl... p... a... ead... a... e... e... b... id... a... e... de... ac... i... e... e... g... a... ff... -... c... ea... g... e... f... f... l... e... ,... p... u... f... p... e... f... e... c... a... d... id... -... ead... g... ga... e... p... ib... ,... l... a... g... re... e... p... ace... a... be... a... d... a... d... g... c... o... m... b... i... t... a... a... a... be... ge... .



Climate Protection



CREC a realizat o serie de proiecte de dezvoltare, cum ar fi: proiectul de dezvoltare a fabricii de echipamente electrice de mare putere, proiectul de dezvoltare a fabricii de echipamente electrice de mare putere, proiectul de dezvoltare a fabricii de echipamente electrice de mare putere, proiectul de dezvoltare a fabricii de echipamente electrice de mare putere. CREC a realizat o serie de proiecte de dezvoltare a fabricii de echipamente electrice de mare putere, proiectul de dezvoltare a fabricii de echipamente electrice de mare putere, proiectul de dezvoltare a fabricii de echipamente electrice de mare putere, proiectul de dezvoltare a fabricii de echipamente electrice de mare putere.

Totodată, CREC a realizat o serie de proiecte de dezvoltare a fabricii de echipamente electrice de mare putere, proiectul de dezvoltare a fabricii de echipamente electrice de mare putere, proiectul de dezvoltare a fabricii de echipamente electrice de mare putere, proiectul de dezvoltare a fabricii de echipamente electrice de mare putere. CREC a realizat o serie de proiecte de dezvoltare a fabricii de echipamente electrice de mare putere, proiectul de dezvoltare a fabricii de echipamente electrice de mare putere, proiectul de dezvoltare a fabricii de echipamente electrice de mare putere, proiectul de dezvoltare a fabricii de echipamente electrice de mare putere.





C p a e G e a c e

2016	7					
3	4					
		5				
	5					
3	2					
3						
	3					
		5				
	2					
2	3					
		2				
1	8	1	4	1		
	8)	1			
	1					
2016	"	"				
	"	"				
		"				
		"				
		"				
		"				
		"				
2016				1		
	1			10		
5		17				
266		205				

In 2016, the Board of Directors issued 71 million shares, including 3 million shares, 4 million shares of the company, and the Board of Directors issued 5 million shares of the company. The Board of Directors issued 5 million shares of the company, including 3 million shares of the company, and the Board of Directors issued 3 million shares of the company. The Board of Directors issued 3 million shares of the company, including 2 million shares of the company, and the Board of Directors issued 1 million shares of the company. The Board of Directors issued 8 million shares of the company, including 1 million shares of the company, and the Board of Directors issued 1 million shares of the company. The Board of Directors issued 1 million shares of the company, including 1 million shares of the company, and the Board of Directors issued 1 million shares of the company. The Board of Directors issued 1 million shares of the company, including 1 million shares of the company, and the Board of Directors issued 1 million shares of the company.

2016年，公司完成了“13年年度股东大会”的议案，共发行10亿股，其中发行5亿股，发行5亿股，发行5亿股，发行5亿股，发行5亿股，发行5亿股，发行5亿股，发行5亿股，发行5亿股，发行5亿股。公司完成了“13年年度股东大会”的议案，共发行10亿股，其中发行5亿股，发行5亿股，发行5亿股，发行5亿股，发行5亿股，发行5亿股，发行5亿股，发行5亿股，发行5亿股，发行5亿股。

In 2016, the company issued 10 million shares, including 5 million shares of the company, and the Board of Directors issued 17 million shares of the company. The Board of Directors issued 266 million shares of the company, including 205 million shares of the company, and the Board of Directors issued 266 million shares of the company. The Board of Directors issued 266 million shares of the company, including 205 million shares of the company, and the Board of Directors issued 266 million shares of the company. The Board of Directors issued 266 million shares of the company, including 205 million shares of the company, and the Board of Directors issued 266 million shares of the company.



Lista Căminelor Șaptezecarecaci

			2016
5		63	
5	76		
			2016
"		"	

CREC a acordat o serie de plăți de compensații pentru a acoperi costurile. În conformitate cu Decretul nr. 107/2016 al Guvernului, în ceea ce privește proiectele de investiții, în luna mai a fost lansat un proiect de lege pentru a clarifica și îmbunătăți mecanismele de compensație. În luna mai a fost lansat un proiect de lege pentru a clarifica și îmbunătăți mecanismele de compensație. În luna mai a fost lansat un proiect de lege pentru a clarifica și îmbunătăți mecanismele de compensație.

În luna mai a fost lansat un proiect de lege pentru a clarifica și îmbunătăți mecanismele de compensație. În luna mai a fost lansat un proiect de lege pentru a clarifica și îmbunătăți mecanismele de compensație. În luna mai a fost lansat un proiect de lege pentru a clarifica și îmbunătăți mecanismele de compensație.

În ceea ce privește proiectele de investiții, în luna mai a fost lansat un proiect de lege pentru a clarifica și îmbunătăți mecanismele de compensație. În luna mai a fost lansat un proiect de lege pentru a clarifica și îmbunătăți mecanismele de compensație.

H e Ma a g e e

2016

PPP

21

AAA

I 2016,CREC ic il pel e ed ea ed a a d e g a i i l a e
pe a i de e p i e .I acc da ce i i e a i i pa i o p a ed
i i d ed f b d d e a d PPP p e c p c i e l e , i i e
ca e f i e a i i p e a i i b e a i i l c i i c i a d p d c i
p c e d e ,CREC i e i e d e a i a i a a g e l e ,I a d e e a
e i i c e a a g e l e , p i i e d e c i i c i i g a i i g i e d
a d a b e l p i e l e d a d c i l p e e f e d e c i l i l e
e a c c a c .A a f 21 p e c e e a a d e d a e c i i c i
i e f a i a AAA-e e a f e a d g i i a i a e a a d a d a
a d e d i e g i .

2016

2016

1 2016

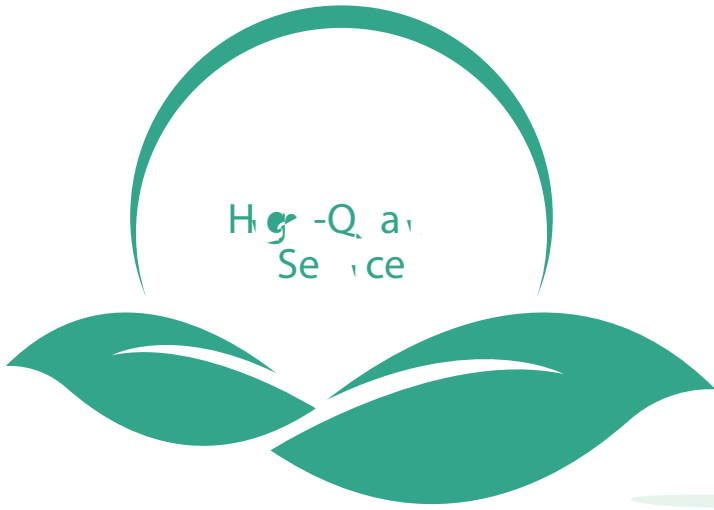
A

A

I 2016,CREC N .1,CREC N .4 a d CREC N .8,CREC N .9,CRBB (C i a
R a a B i d e B e a) ,CRCEG (C i a R a a C i i c i E g e e i g
G i p) ,CRAC (C i a R a a A p C i i c i G i p C i i L d) a d
CRSBG (C i a R a a S a a g e a B i d e G i p C i i L d) e e a a d e d
a i a c i a c e d i i e e p i e ,CREC N .3,CREC N .10,CREC
S a g e a B e a a d BRDI (C i a R a a M a B i d e R e c i a a c e
& D e i g i l i i e C i i L d) e e a a d e d p i i g a c i a c e d
e e p i e ,CREC N .3,CREC N .7,CREC N .10,CRBB (C i a R a a
B i d e B e a) ,CRCEG (C i a R a a C i i c i E g e e i g G i p)
a d CRAC (C i a R a a A p C i i c i G i p C i i L d) e e
a a d e d a d a c e d e g a i i i a i a a p a i c p a e ,CREC
N .2,CREC N .6 a d CRBB (C i a R a a B i d e B e a) e e a a d e d
2016 p c a c e d a b e c i i c i c p a e .

I f l a i 1:I 2016 a a c i i c i e e p i e c e d a i g i e
a f e a , e i i i c d e CRPCEG (C i a R a a P a d C a e
E g e e i g G i p C i i L d) ,CRAC (C i a R a a A p C i i c i
G i p C i i L d) ,CREC N .4,CREC N .1, a d CREC S a g e a B e a i e e
a e d a A , a i i g i i i d , f f i i i a d i i i , e p e c i e .I i e
e c d a f e a , i i i i c d e CREC N .3,CREC N .4,W i a R a a
E e c i c a i B e a G i p C i i L d ,CREC N .2,CTECG a g e a B e a
a d CRAC (C i a R a a A p C i i c i G i p C i i L d) e e a e d
a A , a i i g e c d , f i i i i e e i i i a d e i i e p e c i e .

I f l a i 2:I 2016,CREC g a a e e d a b a c i f e p e c e e



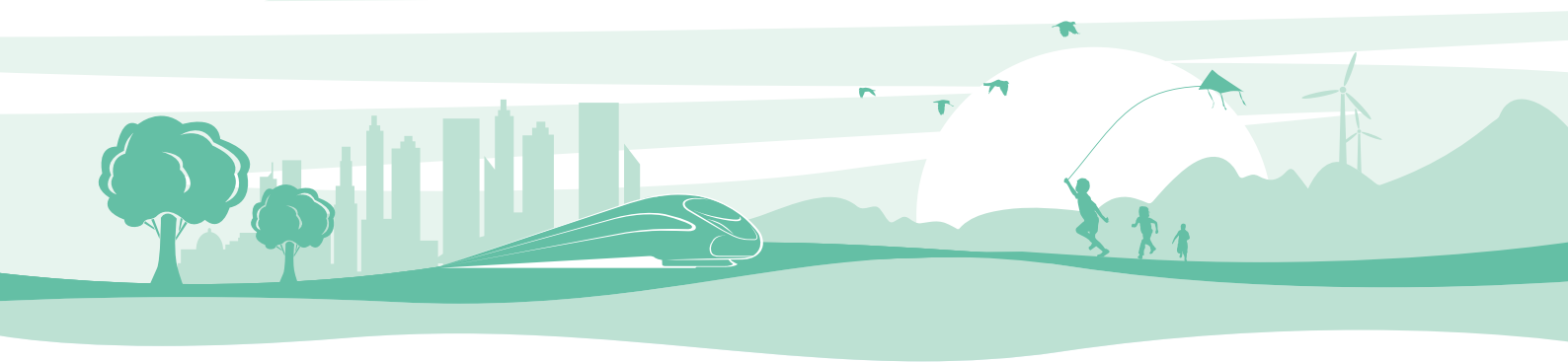
Il p el e fP ca E i l e



Il p el e fSe viceQ a



C i c i fHog -Q a P ec



Il p... e... fP... ca E... l e...

CREC a p... e f... ec... ca f... ce a d... l... ec... a... ca e... p... e... a... ca be... ed... c... l... pe... ge... ca a d... d... ca c... d... a... e... a... pe... ga... e... l... e... f... c... c... f... a... a... , ad... b... d... ge... a d... l... ca p... a... b... d... ge... ca... a... l... c... e... F... l... be... d... e... Gea... Wa... e... l... , f... l... e... Ea... Sea... e... c... e... ed... pa... ea... , CREC p... e... pe... b... de... e... p... ge... e... p... f... " ec... ca... ge... ca... pa... d... e... p... ca... f... e... ce... e... ce... " a... e... p... e... f... ec... ac... ve... ed... e... ac... ed... l... ca... a... e... a... ea... d... p... e... de... e... d... ge... ca... l... p... e... d... a... d... e... f... a... l... ge... f... fa... f... p... ca... e... fed... f... ge... ba... f... a... l... c... e... c... c... c... c... , l... a... ge... l... p... e... p... e... p... f... l... a... ce... l... e... ge... ca... e... f... il... p... ca... e... ge... p... ca... e... l... e... f... e... Ea... f... l... a... d... d... ea... .

l 2016, e... ac... a... ge... (e... ve... d... be... ve... e...) a... e... l... e... c... l... p... a... c... l... pe... ed... c... e... ed... 7161... l... ee... , e... e... c... if... ed... a... a... c... ac... ge... e... a... 8250... l... ee... , e... ad... c... e... ed... 2244... l... ee... (c... d... ge... ee... pe... a... f... 1121... l... ee...). T... e... e... c... c... ed... b... d... ge... c... e... ed... 1734... l... ee... a... d... e... l... e... e... e... d... ed... 1368... l... ee... .

l f... l... a... : CREC a... a... a... be... c... l... l... ed... p... l... ca... e... r... f... a... l... c... e... c... c... c... c... c... c... c... a... be... e... ve... ce... e... pe... ga... l... f... l... a... ea... c... d... ge... ca... e... a... d... a... p... ca... b... c... l... p... e... b... d... ge... , ve... e... ve... p... ace... a... d... ca... l... e... , a... d... c... c... c... c... l... p... e... d... e... l... ca... a... ve... f... f... ge... c... f... p... b... c... f... a... l... c... e... , ed... ced... e... pe... a... ed... c... c... c... c... , a... ed... a... d... a... d... e... ge... , p... l... e... d... e... l... e... a... p... e... c... ca... d... b... ed... ga... l... a... a... be... de... e... p... e... ; ad... d... , v... f... c... ed... e... ea... c... a... d... de... p... e... , ea... d... p... l... ca... f... e... ec... ca... ge... , e... p... ce... e... a... d... e... l... a... e... a... a... e... p... il... p... e... e... ve... ce... f... a... l... c... e... , a... d... e... c... c... b... el... e... ve... e... ve... f... a... l... c... e... ge... l... 2016, a... a... e... l... e... f... "C... a... R... ee... E... e... p... e... Ac... ve... S... a... a... be... De... e... p... e... G... a... " .

2016		
7161		8250
2244	1121	
1734	1368	

2016



Il p el e fSe iceQ a

2016

" " "

ISO9000
QC

I 2016,CREC a a ed e e e a dea f"e e pe fec. a d c a il p el e "a da eed pe pe e ed c cep c a il p e e ice a a a a de f e p be f e a , e pe pa d ec p ae. A e al e il e, ef p ec ec. I e b e e e e f l a a d pe a p ac.

I p ec a, l a a e e , CREC e a il p el e ed ISO9000 el a da d a d Mea e f P ec Q a S pe a d Ma a e e , e ca ed QC ac e e, de e ped fea be a pa , e pp fe a a e e e ad pe a ed pe a e ce e ce p a e e e a e fe ce e ce ac e e e a.

I d a e e p e e ice, ba ed l a p ec p d c, e c l pa c a e a ced pe-ae, a e a d a fe-ae e ice. I add e e e e f e a d e e e de a d e del a d, c ec p d, c feedback p e e de c a il p e e p d, c a de ice, a a d p l e l a a e e e.

I a ga e ice, ec l pa c pe a ed a e a ga e e e a ba , a ce l pa e a d e e e e a e a d de e p f a ga p d, c b l a e f e f ce a e e p e a ga e ice a da a a e fab, da e - a a e a a f l e e-ae d e - a a fa , c, e e l e a a a ga p d, c a d d ce e l e a d d a e e . A e al e il e, e e eed f e de e p e , ac e ca ed e e e a f d a d f a ce a a d f d a f e -dep c pe a e be e e e p e a d f a ga e e e e .

1 2016

G20

I f l a e 1: I 2016, C a R a a E e c a B e a c ce e , d d a e d b e e e e a a a p a d l a a e e e ice l a fe a a d l p a ac e e. E pe a d e e H a e G20 S, l l a d e e a e e e l a p f a l be f e - pe e a c, d e H a e - H a e a H e - pe e R a , H a e - C a e a H e - pe e R a d H a e - N e b H e - pe e R a , e c.

2 2016

TBM

I f l a e 2: I 2016, pp e d b c d c l p e p a f l a d b e da a ec e , C a R a a E e e e e E e p e G e p c , L d e ab e d TBM p l a a d e c e l a e e a d e e e c e e pe el l ac e b e pa eff ge a d, f e d d e a el ec e c e c e l a e p a f l a d c ab a e de e p a f l ac e e R & D da ce a e d l a a e e a d a e e e a e a g e e a e f e ice.

3

2016

5.8



Construction of High-Quality Projects

2016

“ ”

In 2016, CREC continued to adhere to the principle of "quality first, safety first, efficiency first". The company has achieved significant progress in the construction of high-quality projects. Through the implementation of the "Quality First" strategy, the company has effectively improved the quality of its projects, ensuring that every project is a high-quality project. In 2016, CREC completed the construction of 13 projects, including the construction of the Xianyang Metro, the construction of the Chengde Airport, and the construction of the Kunming Metro. The company has also completed the construction of a number of other projects, including the construction of the Yunnan Expressway, the construction of the Sichuan Expressway, and the construction of the Shaanxi Expressway. In total, CREC completed 151 projects in 2016.

2016

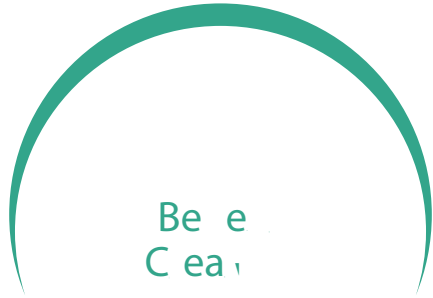
13

2 3

151

In 2016, CREC completed 13 projects, including the construction of the Xianyang Metro, the construction of the Chengde Airport, and the construction of the Kunming Metro. The company has also completed the construction of a number of other projects, including the construction of the Yunnan Expressway, the construction of the Sichuan Expressway, and the construction of the Shaanxi Expressway. In total, CREC completed 151 projects in 2016.

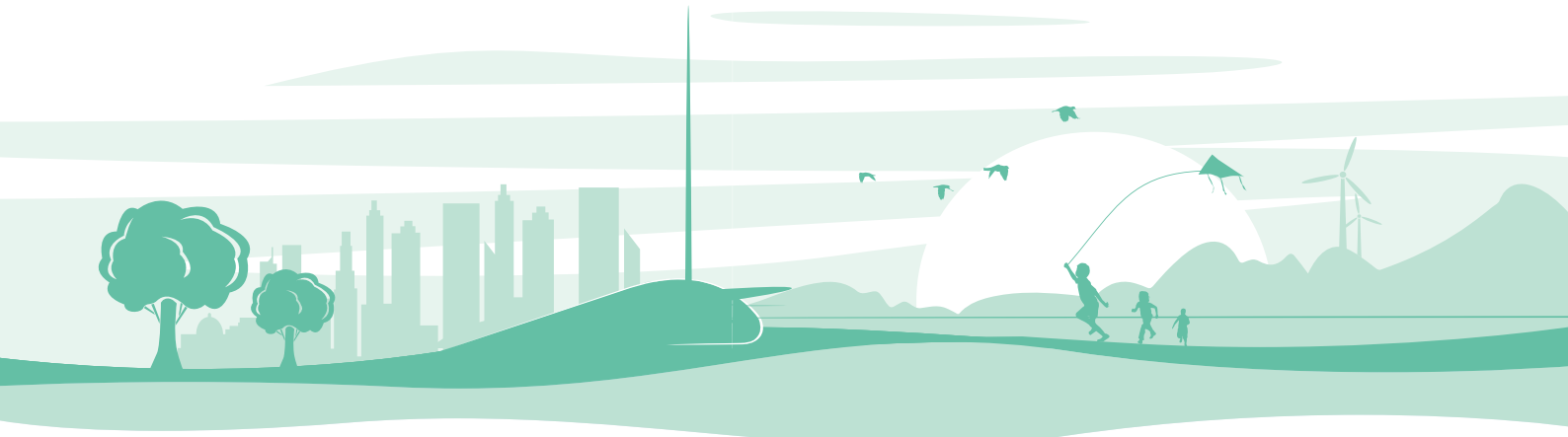




P I ... fEc ... lncDe e p le

S ca C ... b ... Va e

C ... P I ... fEl p le



Profit of Ecologic Development

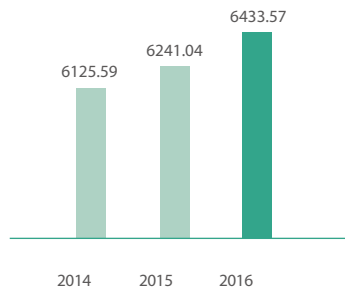
2016	2015	2014
6433.57	6241.04	6125.59
12350	9570.20	9346.10
2.03	423.12	390.28
0.517	125.09	3.08

2016

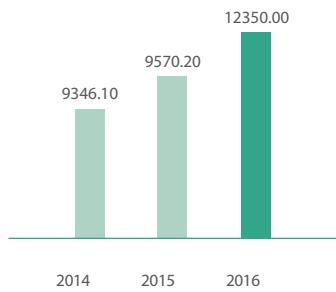
CREC achieved a double-digit profit of RMB 6433.57 million in 2016, an increase of 3.8% compared with RMB 6241.04 million in 2015. The profit was primarily driven by the increase in operating profit of RMB 12350 million, an increase of 29% compared with RMB 9570.20 million in 2015. The increase was mainly due to the increase in sales volume and the improvement of operating efficiency.

In 2016, the operating profit of RMB 12350 million, an increase of 29% compared with RMB 9570.20 million in 2015, was mainly due to the increase in sales volume and the improvement of operating efficiency. The operating profit of RMB 12350 million, an increase of 29% compared with RMB 9570.20 million in 2015, was mainly due to the increase in sales volume and the improvement of operating efficiency.

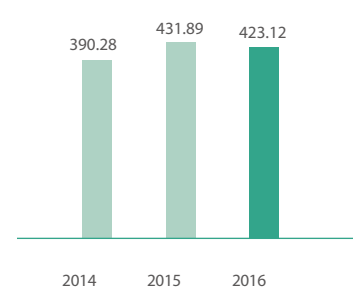
(Unit: RMB 0.1B, YTD)



Operating Profit



Total Revenue



Payable

- 1
- 2
- 3
- 4



Commitment to Employee Well-being

2016			CREC has fully implemented employee well-being measures. In 2016, CREC has implemented the following measures: (1) Improve the living and working conditions of employees. (2) Strengthen the safety education and training of employees. (3) Improve the health care of employees. (4) Strengthen the cultural and sports activities of employees. (5) Strengthen the labor dispute mediation and arbitration work.
9702	2016		In 2016, CREC has fully implemented the measures to improve the living and working conditions of employees. The total amount of expenditure for employee welfare is 9702 million yuan.
2016	180	" "	In 2016, CREC has fully implemented the measures to strengthen the safety education and training of employees. The total number of employees who have received safety training is 180 million people.
2016			In 2016, CREC has fully implemented the measures to improve the health care of employees. The total number of employees who have received health care is 400 million people.





Ma e a ce fSa q Re a dl e e



P I , fSa q G



Re f cel e fT eeP .ec C ,c,



Ma' e a ce f Sā, Rō' a d L' ee

CREC pād' e' a e' . I la' e a ce f aff' e' a d' e e' , a d' p' p' e d' e e' a' . T' e' e' a' e' f a b' c' a c' a c' c' d' e' a' p' e' a b' i' e d' a' g' e' n' c' a' a' l' a' a' g' e' l' e' e' d' a' d' l' a' a' e d' e' a' q' e' e' a' e' a' d' e e' .

Lab' C' ac Ma' a' g' e' l' e

I 2016, e' c' l' p' a' i' c' i' l' p' e' l' e' e' d' e' a' i' a' Lab' C' ac' L' a' , a' d' e' e' a' e' a' e' f a b' c' a' c' i' e' e' c' l' p' a' e' a' c' e' d' 100%. M' e' e' p' i' c' e' e' c' e' d' c' a' c' c' a' e' p' a' d' d' i' t' i' o' n' e' a' e' i' l' p' e' l' e' e' d' a' i' a' a' a' d' e' e' a' i' c' a' c' i' e' e' b' c' p' a' e' , i' c' a' d' a' d' e' d' l' a' a' g' e' l' e' c' a' c' i' e' e' b' c' p' a' e' , a' d' q' e' c' i' e' l' a' a' e' d' e' a' q' e' e' a' e' a' d' e e' . I' f' e' l' p' e' e' i' a' b' e' p' e' f' l' e' b' e' e' i' a' e' e' e' f' e' c' l' p' a' , b' p' a' e' i' e' l' i' a' e' e' a' b' c' a' c' .

Sā' Saa' Ma' a' g' e' l' e

CREC b' i' d' e' e' a' e' l' p' e' e' a' a' i' c' e' a' e' l' e' c' a' i' l' a' d' i' c' l' e' e' a' e' e' l' e' c' a' i' l' e' e' e' a' f' f' a' a' c' i' d' b' e' p' a' d' i' l' e' i' f' i' a' b' e' e' b' e' e' f' i' a' f' f' b' l' e' a' i' f' c' p' a' e' d' e' p' e' a' c' i' e' e' l' . I 2016, e' a' i' c' l' e' e' c' i' d' a' d' a' p' c' i' p' a' e' e' c' i' c' b' e' e' e' e' , a' d' e' e' e' f' a' i' c' l' e' a' e' a' d' i' l' p' e' d' i' e' c' p' a' e' d' e' p' e' .

Sā' S' c' a' l' i' a' c' e' Ma' a' g' e' l' e

CREC p' e' c' e' d' e' a' g' a' e' c' i' e' e' a' d' e e' f' i' e' a' f' f' i' , p' e' i' e' d' a' d' , e' d' l' e' l' b' e' c' p' a' e' i' c' o' p' i' a' e' d' l' e' i' c' i' a' c' e' , b' a' c' l' e' d' c' a' i' a' c' e' , i' c' e' a' e' d' i' c' i' a' c' e' , i' c' e' l' p' l' e' i' c' i' a' c' e' a' d' i' a' e' i' c' i' a' c' e' f' i' e' a' f' f' i' . a' d' d' i' t' i' o' n' e' c' l' p' a' c' i' e' i' l' p' e' l' e' e' d' a' i' a' e' i' l' e' a' b' i' d' i' a' d' c' p' a' e' g' a' i' a' c' e' b' e' i' e' d' i' c' a' l' a' a' g' e' l' e' . I 2016, i' e' e' a' d' a' d' e' d' b' i' e' d' e' p' e' a' i' l' a' a' g' e' l' e' , i' p' e' i' e' d' l' e' l' b' e' c' p' a' e' i' e' a' b' i' a' i' p' a' .

Del' c' a' i' c' Rō' f' Sā

I 2016, e' c' l' p' a' e' d' e' 2^d e' i' f' e' e' c' d' i' e' c' e' e' . O' e' c' e' e' , e' a' b' i' i' e' e' d' CREC 2016 C' e' c' i' e' C' a' c' i' e' c' p' a' e' b' e' a' f' a' q' i' i' e' d' e' e' e' l' f' i' e' c' e' e' e' f' a' d' i' i' a' e' i' e' p' , d' e' l' c' a' i' c' a' p' p' a' e' e' e' a' d' a' d' a' p' p' a' e' p' , a' d' f' i' e' l' b' c' e' d' e' c' a' e' f' d' e' l' c' a' i' c' p' a' i' g' p' a' i' , l' a' a' g' e' l' e' a' d' i' p' e' i' .

Life G' a' a' e' e' f' Sā

I 2016, CREC e' i' c' a' e' d' i' G' i' d' a' c' e' S' a' f' f' L' i' f' e' G' a' a' e' e' W' i' , f' i' e' d' e' e' p' e' e' d' e' e' e' p' e' l' i' i' a' d' e' e' p' e' e' i' c' i' l' l' i' e' f' a' q' c' a' e' p' e' a' l' a' d' e' a' c' i' o' n' f' i' a' l' -d' e' e' i' e' f' e' i' a' " e' p' a' f' f' e' e' d' f' f' c' i' e' l' a' i' p' e' c' e' d' a' d' e' l' b' i' e' d' p' e' c' a' f' d' f' e' RMB 56.48 I' i' Y' a' f' " e' e' p' e' e' i' " a' c' i' o' , a' d' e' p' e' d' e' 30,000 a' f' f' i' d' f' f' c' i' . T' e' c' l' p' a' a' e' d' a' l' -d' e' e' f' d' f' RMB 165 I' i' Y' a' f' " a' l' -d' e' e' i' e' f' e' i' a' " i' i' e' d' e' 250,000 a' q' i' e' e' , i' e' a' d' p' e' a' i' e' , a' d' e' a' e' d' a' i' l' i' d' a' d' p' a' l' e' f' RMB 7.50 I' i' Y' a' e' p' 3933 c' i' d' e' f' i' e' e' d' a' q' .

Sā' H' i' d' a' S' e' l

T' e' c' l' p' a' i' c' i' l' p' e' d' i' e' a' i' a' a' b' i' a' a' d' e' e' a' i' , c' a' e' f' i' l' p' e' l' e' e' d' e' a' i' a' R' e' g' a' i' . P' a' d' A' i' a' L' e' a' e' f' B' i' p' e' e' a' d' a' i' e' e' i' d' a' e' e' a' i' . I' p' a' d' e' l' e' a' i' a' d' e' i' e' a' a' a' q' a' a' e' d' e' e' a' i' d' a' , p' b' i' c' i' d' a' e' i' e' l' e' a' c' c' d' e' e' a' i' a' e' a' p' i' .

2016

100%

2016

2016

2016

2016

2016

750

3933

"

"

"

"

5648

3

1.65

25

Partnership and Social Governance

CREC has implemented the "Three-Party Cooperation" strategy, established a cooperation mechanism with the government and the public, and deepened cooperation with the government, the public, and the media. It has actively participated in social public welfare activities, and has established a cooperation mechanism with the government, the public, and the media. It has actively participated in social public welfare activities, and has established a cooperation mechanism with the government, the public, and the media.

In 2016, CREC implemented the "13 Five-Year" strategy, and deepened cooperation with the government, the public, and the media. It has actively participated in social public welfare activities, and has established a cooperation mechanism with the government, the public, and the media. It has actively participated in social public welfare activities, and has established a cooperation mechanism with the government, the public, and the media.

In 2016, CREC implemented the "13 Five-Year" strategy, and deepened cooperation with the government, the public, and the media. It has actively participated in social public welfare activities, and has established a cooperation mechanism with the government, the public, and the media. It has actively participated in social public welfare activities, and has established a cooperation mechanism with the government, the public, and the media.



Reference of the Project

2016	" "	" "	" "
	2.7		
1	2016	" "	1855
	" "	" "	
	" "	" "	
2		" "	
		" "	
		1	2
3			
" "	" "		

In 2016, CREC achieved the social responsibility project of the "Liaison", also carried out the "Yan'an" project, with a total investment of RMB 270 million. The "Yan'an" project is a project for the construction of the "Yan'an" project, which is a project for the construction of the "Yan'an" project, which is a project for the construction of the "Yan'an" project.

Project 1: In 2016, CREC invested RMB 18.55 million in the "Yan'an" project. The project is a project for the construction of the "Yan'an" project, which is a project for the construction of the "Yan'an" project.

Project 2: CRBB (China Railway Bridge and Tunnel Group) carried out the "Happ Family" project, which is a project for the construction of the "Happ Family" project, which is a project for the construction of the "Happ Family" project.

Project 3: CRCEG (China Railway Construction Engineering Group) carried out the "Liaison" project, which is a project for the construction of the "Liaison" project, which is a project for the construction of the "Liaison" project.



Pe fec, fMa aget e S el



Il pel e a, fSafe a dMea e



C ce ab, Occ pa, a Hea



Pe fecur fMa agel e S el

"

"

CREC c a a a " l a a abec d i f afe
p d c i , p i d e e g e i a f e a d e d - a i
a c i e c i a p d c i , p i d e e p b i c i p e a a
e i l e a d c e a e a f e a d e a i c d i f i e
aff" a e l i l p a a p e c f i g a e p i b i l
e e l c i c i p d c i a d p e c l a a g e l e

; S W B S W U B = W b Q B P V B P P U B P P U B 5 T P P P P P P P O e B 6 B 7 5 B a B B

2016

"

"

"

"



Il pel e a f Safety a d Mea e

2016

12

I 2016, e l p a d e p e d a d c a e d e a e a e a a e c i f i c a t i o n a c t i o n s , p e r f o r m e d 12 p e r f o r m a n c e a d v a n c e d c o n s t r u c t i o n e b a s e s f o r a f e a d d a t a a g e l e . T e c h n o l o g y a p p l i e d e e a e p e r c a s e a f e p d c o n s p e c t i v e e f i n a d e c d a f e a , e p e c t e . B a s e d o n e a d v a n c e d e q u i p m e n t p r o j e c t , a g e e l p a f a c t o r , p p e l , l e c a c a e l p e p e a t , e e e a " e e a t " ; b e c a u s e e c o n s t r u c t i o n p e c t o r c o n d u c t i v e a f e a d a t a p e c t o r e c o n f i g u r e , b a s e d a d p e a t a e f e p e c t o r d e c o n s t r u c t i o n a c c o n d a t a c a n t - p a c e c o n s t r u c t i o n , p e f a b r i c a t i o n e e c o n s t r u c t i o n (d e e d) a d b e d , b o d e a d b o r a d e a c c e p t a n c e , e d e f a b r i c a t i o n e d a d p e f a b r i c a t i o n e d , l i n e a r a d e e e p e r .

2016

I 2016, e l p a c l i p e d e " M a j a f S a f e t y a d a d a t a C R E C S , b a C o n s t r u c t i o n O p e r a t i o n " a d v a n c e d p l e d e a d a d e d p e a t f a b a c t o r c o n s t r u c t i o n e d l a c e l a e a c e l a a g e l e a e a a d a d e d l a a g e l e f e d l e a e l e . A e a l e l e , b o d e e a f e p d c o n s t r u c t i o n c o n s t r u c t i o n a d a f e a d a t a a d a d a t a l a a g e l e a a a e d c o n s t r u c t i o n e p e e .

1 2016

6

I f l a t 1: I 2016, C R E C N . 4 e e p l e d e a f e a d a t a e c o n s t r u c t i o n a d f l a t a t l a a g e l e , a d f e p l e d a d i p e d e f l a t e l f a f e a d a t a d d e d a e d e f i c a t i o n a d c a e d a p a e e e e e p e c t o r p l a n , a e e e e d e e . I l e l e a e , C R E C N . 4 a c d c e d 6 a f e a d a t a a g e d e e c a e f " e e c a e e f p e e e " a d 10 a f e p e r a d a f e a d a t a d e c e f i c a t i o n a e , a e g r a f a d a f a f e p d c o n s t r u c t i o n .

2 2016

I f l a t 2: I 2016, C R E C N . 7 e e e e d e a f e l a a g e l e l d e f e a e p o b i l i t y e l p e r i o d a d e g r a f f d e p a l e a d e g r a d f f e e e l " e e a t " p e a t , e e a c e d d e d a e " a e e d e f i c a t i o n a d " e d e a , e p e c a c c d e " a e b l i n e e d e e e e e a f e b e c t e r d e a c r e f i c a e a e a d d e a d e e a f e a d a t a p c e c o n s t r u c t i o n a d e l i n e a d d e a d p a c e e a f e a d a t a p e r i o d l a a g e l e a a c r e e e a f e a c c d e .

10



Community Occupational Health

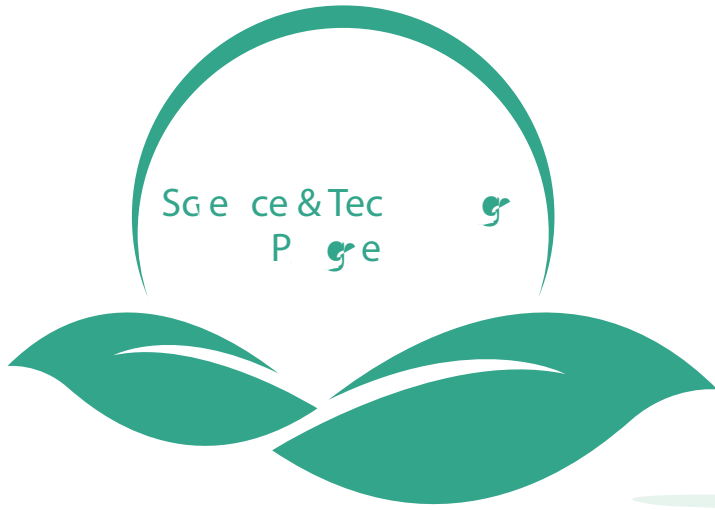
2016	2016		
"	"		
"	"		
21800		282326	
1		337	2016
298	224	8000	
2			

In 2016, CREC entered into a partnership with the People's Republic of China Occupational Health and Safety Association (hereinafter referred to as "Occupational Health Association") to carry out a series of activities in the field of occupational health and safety. The activities include: 1. Organizing occupational health and safety training for employees of member companies. 2. Providing occupational health and safety consultation services to member companies. 3. Carrying out occupational health and safety field investigations and evaluations for member companies. 4. Organizing occupational health and safety competitions and exhibitions. 5. Carrying out occupational health and safety research and innovation projects. 6. Organizing occupational health and safety public relations activities. 7. Carrying out occupational health and safety standardization work. 8. Carrying out occupational health and safety certification work. 9. Carrying out occupational health and safety information exchange and cooperation. 10. Carrying out occupational health and safety international cooperation and exchange.

The occupational health and safety work carried out by CREC in 2016 has achieved significant results. Through the cooperation with the Occupational Health Association, CREC has successfully organized a series of occupational health and safety training activities for employees of member companies, effectively improving their occupational health and safety awareness and skills. In addition, CREC has also provided occupational health and safety consultation services to member companies, helping them to identify and eliminate occupational health and safety hazards. Through field investigations and evaluations, CREC has effectively improved the occupational health and safety management level of member companies. The activities carried out by CREC in the field of occupational health and safety have not only benefited the employees of member companies, but also contributed to the improvement of the occupational health and safety management level of the entire industry.

Item 1: CREC National Occupational Health and Safety Training
 In 2016, CREC organized a series of occupational health and safety training activities for employees of member companies. The training content includes: occupational health and safety basic knowledge, occupational health and safety hazard identification and control, occupational health and safety emergency response, occupational health and safety management system, occupational health and safety standardization work, occupational health and safety certification work, occupational health and safety information exchange and cooperation, occupational health and safety international cooperation and exchange. The training activities have effectively improved the occupational health and safety awareness and skills of employees of member companies.

Item 2: BRDI (China Railway Material Building Research and Development Co., Ltd.) Occupational Health and Safety Consulting Services
 In 2016, BRDI provided occupational health and safety consulting services to member companies. The consulting content includes: occupational health and safety hazard identification and evaluation, occupational health and safety management system, occupational health and safety standardization work, occupational health and safety certification work, occupational health and safety information exchange and cooperation, occupational health and safety international cooperation and exchange. Through the consulting services provided by BRDI, member companies have effectively improved their occupational health and safety management level.



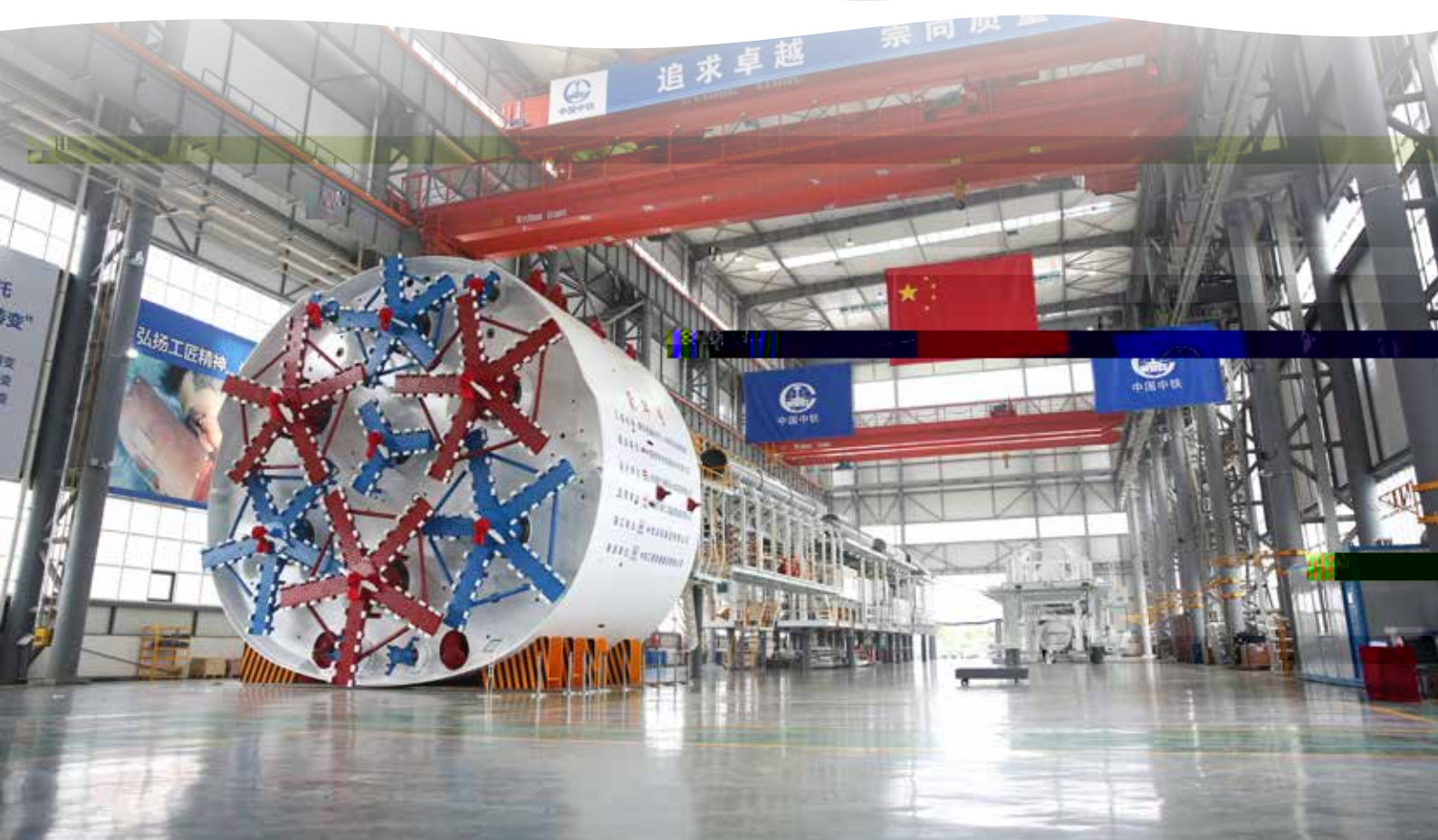
Innovation & Quality



Leadership & People



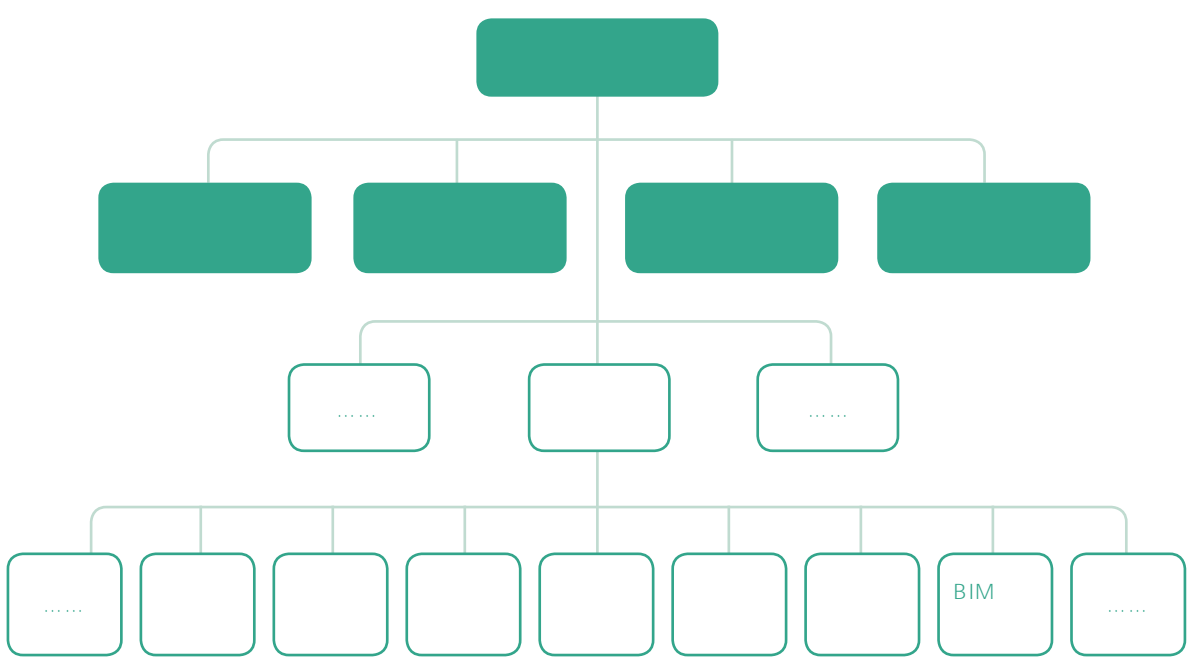
Sustainable & Digital



Il p e l e f l a , S e l

2016

Acc d e e e e e e f g e n c a d e c a i a i p f a d b e e e a d c i c i d a d e d e l a d f c p a e e f d e e p e , e c l p a p e d p e l p e l e a i f g e n c i a i d i e d e e p e . l c a e d i e a p a i g a d p i a i a d i e g a i e n g e n c i e c e a d c i a p e f e c e d " g r a d e a d f l a e " e c i c a i a i e l i C r e e c a a c e i c i l a e a i e a i c p a e a l a b d p e c a c a e , a i a a b a i a b a i e c i c a c e e a p a f l a d p f e i a R & D c e e a b a c b e i g r a d p e g e n c i e e a c i a a c i e e c i c a i a i e p e a i l a a g e l e l d e i a e i g r a d a d e c i a d d i i a e e d e c i b a i C R E C e c i c a c e e a i e e a d g r a l e l b e e e p i e e c i c a c e e a l a b d a d a p f e i a R & D c e e a b a c b e i a g r a d f i d a i f g e n c i a i . l 2 0 1 6 , e c l p a e i i l p e l e e d e a e i a i d i e d e e p e i a e g , a d c c e f i c l p e e d e p e c f " S d f l a i M d e f C e a C i c i E e e e C p a i " i e d i e p e g a i p a f S A S A C c e a g e n c i a i l a a g e l e . C R E C l a d e e a p a i g r a d i g r e d i a i . M e e i e d e 5 c c l p a g e n c i a i l e e g r a d a l a d e S c C l p a " 1 3 F i e - Y e a P a " f S c e c e a d T e c g D e e p e a d D e g i O e a l l p e l e a i f S c e i c l a i D i e D e e p e . l a d d i i e e d l e a e l a a g e l e f g e n c i R & D p a , d e e p e d l e a e l a a g e l e f g e n c i e e a c f d g r a d e e c l p a g e n c i d e e p e a d p l e c p a e i c e a d l e a e a a f l a i a d p r a d g r .



" "



				2	2016			
				FIDIC	---			
							FIDIC	
					2016			
					91			1161
						78		
					171			
"	"	"	"					
					3			5964
"	"		"		1661	166		1850
		7		11				
		40			4	2016		
					77		20	58
					2016	ENR	225	
					64	2015	11	
					1	2016		3
					1			
		320		2016				
		107						5
14								
2699								

Lead  Id  a P  e

Seergeri a Dve

2016

899

" "

Il 2016, CREC ca ef... il pel e ed e a... a... de e f... ge... ca d ec... ca... f... de pe de... a... e pa... e... pp... abe de e... ple... a d ead... e f... e". Cl b ed... e ac... a e e p... e de e p... e a de... e e... e... c... del a d, ... e... a ed 899 e eac p... ec... Ce... e... e... e... ed l a... pp... ed b... e a ea de e p... e "13 F e-Yea Pa " f... ec... e... de e p... e, ec l p... e a ced ge... f... c e eac... e... e... e... - p... eed a, a... e pa b... d... e, ... e, ... -ca b... ec... e... d... a... p... ad... e... a f l a... f... ge... f... c e eac... ac... e... e... e... a... f... d... a d... a ce, ... a... ed a d ca... ed T... 5.7B7 (-)-3, 1 f... a... (a...)6.1H(201 p... e... (e... (a... 3 B7 (-)-3.)11 (

1 2016

-

400 l /

2 2016

7



P l e f E e S a g a d E l l Red c



S e e e E l e G e a c e



P e c f E c c a E l e





Project Environmental and Social Risk Reduction

2016	"	"	"
2016	0.0590	3.27%	2016
1	2016	20	55
2	2016	5800	"
3	2016		
4	2016	7	3
			160

In 2016, the company participated in the "13 Five-Year" plan for environmental protection, and completed the "13 Five-Year Plan" for environmental protection. The company actively carried out environmental protection work, and fully implemented the "three red lines" for environmental protection, namely, the "red line" for total water consumption, the "red line" for total energy consumption, and the "red line" for total carbon dioxide emissions. The company has achieved significant results in environmental protection work.

In 2016, the company's environmental protection investment (including capital expenditure) reached 0.0590 billion yuan, an increase of 3.27% compared with the previous year. The company has completed the environmental protection investment plan for 2016.

Item 1: In 2016, 20 projects were defined as 5-star projects, and 55 projects were defined as 4-star projects. The company has completed the environmental protection investment plan for 2016.

Item 2: In 2016, CREC N.3 completed the investment of RMB 58 million in the "Yanjiatai Ancient Market" project. The company has completed the environmental protection investment plan for 2016.

Item 3: In 2016, CRBBG (China Railway Building Group Co., Ltd.) completed the investment of RMB 7 billion in the "Wangjiatai Ancient Market" project. The company has completed the environmental protection investment plan for 2016.

			---	----	--
	CO2		13166396.5	13195853.6	--
					--
					--
	2016			0.0590	--
		3.27%			--
					--
			836790	837891	--
			371160	372650	--
/			1265005	1267443	--
			3350	4100	--
			--	--	
			--	--	--
					--
					--
					--
				" "	
					8
		" "			

Ke p e f l a c e n d c a n t e e a p e c f e l i n t e r n e t e e e l e a a d a a e e c e

	Emissions and Energy Types	Accumulated Completion Value Last Year	Accumulated Completion Value This Year	Environmental and Natural Resources
E a e l e e p e a d e a e d e l e d a a	N e e i d e f i d e a d e p a e e a e d b a a a a d e e a	--	---	--
-T a a l f e e e e g a e l e ()	CO2 O e e a e (p e c f a)	13166396.5	13195853.6	--
H a d a e e e a e d				--
T a a l f a a d a e e e a e d				--
D e a e d e c i p f l e a e a d e e b a e d e e e a a g a d e l e d c i	I 2016, e c l p e e e e e c i l p i (c l p a a b e p i c e) p e e a d b i e c l e a 0.0590 a d a d c a, i c a e d c e d b 3.27% e a - e a b a c l p a e d e a e a, a d e c l p a c c e f c l p e e d e a a b e c i e f e e e a a g a d e l e d c i .			--
D e a e d e c i p f l e d f a d e a a d a d a d a a d a e l e a e e d c e p d c i a d a e .				--
D e c i d e e e e c a i e d b p e (e e e e c i g a)	E e c i g (i a)	836790	837891	--
	G a e ()	371160	372650	--
	D e e ()	1265005	1267443	--
	N a a g a (10,000 a d a d c b c l e e)	3350	4100	--
	O e e e e (p e c f e a l e i f a)	--	--	--
T a a e c i l p i	W a e ()	--	--	--
D e c i b e e e e e b e e p a a d e e b a e d				--
D e c i b e a p b e l e a p p c a b e a e e c e a d e a c e l e a e e e c e c a d e e b a e d	N e			--
N A, l i e d				--
D e c i b e e e e c a i l p a c f p e a a a c t i e e e e l e a d a a e e c e a d e a c a e l a a g e e i l p a c	T e c l p a c a e d a d a d i e c i c i f e e e a a g a d e l e d c i, i c a b e c l e e l a a e. C e e e e e f a a g a d e e i l e a p e c i, e c l p a c a e d a d a d i e c i a c t i e e e e e a a g a d e l e d c i i c p a e d a e p l i e e e p e c e e e a a g a d c i l p i e d c i a e a e e e e c e c a a e f f e c e e a c e e e e a a e f f e c i a d e d c e e a e e e c i l p i . A c c d e e e e l e f " C R E C l e i M e a e f P l i a d M a a g e l e f E e e a a g a d L - c a b T e c e e " (e e a f e e f e d a e M e a e) , e e e c e e , 8 e c e e c d e " C R E C N . 3 T e c e f E e e S a a g a d C i l p i R e d c i S b a d e C i l p i R i g e L a e e a e " a c a f i e d a " C R E C K e E e e S a a g a d L - c a b T e c e " a d a e d e e c i l p a d e c d a a b a e f e e e e a a g a d c a b e c e e .			--



Service Excellence Grade

1 " " " " " AAA

2 70

On Service Excellence, CREC is committed to providing high-quality products and services to our customers. We have implemented a comprehensive service excellence program that focuses on customer satisfaction and service quality. Each project department has established a service excellence committee to monitor and improve service quality. We have implemented a series of measures to improve service quality, including training staff, standardizing service processes, and improving communication. We have achieved a service excellence grade of AAA, which is a testament to our commitment to service excellence.

Figure 1: Service Excellence Grade 11. The company has achieved a service excellence grade of AAA, which is a testament to our commitment to service excellence. The company has implemented a series of measures to improve service quality, including training staff, standardizing service processes, and improving communication.

Figure 2: CREC Ecological Building Grade 70. The company has achieved an ecological building grade of 70, which is a testament to our commitment to environmental protection and sustainable development. The company has implemented a series of measures to improve environmental protection, including energy conservation, waste reduction, and water conservation.



1 2016

2

" "

3

3.4

1

755

6900

80%



Disaster Relief



Anti-Corruption



Customer Service



Disaster Relief

Following the earthquake in the Sichuan province, CREC actively responded to the disaster relief work. The company donated 300,000 yuan to the disaster relief fund, and the employees donated 32,000 yuan to the disaster relief fund. In addition, the company also organized disaster relief activities, such as disaster relief performance and disaster relief donation.

In 2016, the company donated 300,000 yuan to the disaster relief fund, and the employees donated 32,000 yuan to the disaster relief fund. In addition, the company also organized disaster relief activities, such as disaster relief performance and disaster relief donation.

In February 2016, the company organized a disaster relief performance in the Sichuan province. The performance was held in Chengde, and the company donated 10,000 yuan to the disaster relief fund. In addition, the company also organized disaster relief activities, such as disaster relief donation and disaster relief performance.

In July 2016, the company organized a disaster relief performance in the Sichuan province. The performance was held in Chengde, and the company donated 247,000 yuan to the disaster relief fund. In addition, the company also organized disaster relief activities, such as disaster relief donation and disaster relief performance.

2016	2	3200	300
5000			
23	2		
57			
1	2016		
		30	10000
2	2016	7	25
28			247
		93	





Amplificarea Prezentării

2002

34

13

Accordurile SaeC și GP e Aeri au O cea d e
 ee a l i t i e , CREC be a p a g p e r p e a e r a
 ... ce 2002, l e a a d 10 e a , d f e e e a ,
 el el be l i t i e , a a f l i e a c , a e e d f e c a
 p e p e c a l i t i e a e e d a i a c e l i t i e . S c e e e r e e
 capital a e CREC f c l i t i e a e r a i a d p e
 a e r a i , a e 34 p e p e l e d e e a e d e p e c a d e
 G i d e C l i t i e H a P i t i e , R c e e C l i t i e , d e p
 l a e r a e f B a d e C l i t i e f S a i P i t i e a a c l i e ,
 l i p e e p e l e a e r a i C l i t i e f b a c e d c a r f a c i e ,
 c l i t i e e p l e d e f l i p f a l i e , f c l i t i e p e
 a e r a i i 13 c l i t i e e e a c i e b i d e d l i t i e , c a e e ,
 a d l i e a i a d e p a i t i e .



2016	2.1	900	1800	20	"	"
"	"	"	"	3	1.5	10
2016		1000				
8600		3000				
	8000					
1	2016	G20	9			
"	"	"				
11		4	24			



Community Service

CREC actively engaged in the idea of caring for the disadvantaged and the elderly, and carried out various activities. In 2016, CREC carried out 900 volunteer activities, involving 21,000 people. The activities included visiting the elderly, donating blood, and participating in various social welfare activities. CREC also carried out various activities for the elderly, including visiting them in their homes, providing them with medical services, and organizing various cultural and recreational activities for them.

In 2016, CREC carried out 900 volunteer activities, involving 21,000 people. The activities included visiting the elderly, donating blood, and participating in various social welfare activities. CREC also carried out various activities for the elderly, including visiting them in their homes, providing them with medical services, and organizing various cultural and recreational activities for them.

In 2016, CREC carried out 900 volunteer activities, involving 21,000 people. The activities included visiting the elderly, donating blood, and participating in various social welfare activities. CREC also carried out various activities for the elderly, including visiting them in their homes, providing them with medical services, and organizing various cultural and recreational activities for them.

Item 1: In 2016, CREC carried out 900 volunteer activities, involving 21,000 people. The activities included visiting the elderly, donating blood, and participating in various social welfare activities. CREC also carried out various activities for the elderly, including visiting them in their homes, providing them with medical services, and organizing various cultural and recreational activities for them.

Item 2: In 2016, CREC carried out 900 volunteer activities, involving 21,000 people. The activities included visiting the elderly, donating blood, and participating in various social welfare activities. CREC also carried out various activities for the elderly, including visiting them in their homes, providing them with medical services, and organizing various cultural and recreational activities for them.

Item 3: In 2016, CREC carried out 900 volunteer activities, involving 21,000 people. The activities included visiting the elderly, donating blood, and participating in various social welfare activities. CREC also carried out various activities for the elderly, including visiting them in their homes, providing them with medical services, and organizing various cultural and recreational activities for them.



S e e e e S a e e c C pe a



P I , f l d , a C pe a



C , c , P e c C pe a





2016

Service Areas

CREC has established service areas in 17 provinces, municipalities, autonomous regions, and cities. The provinces include Beijing, Henan, Shandong, Jiangsu, Zhejiang, Guangdong, Guangxi, Sichuan, Shaanxi, Shanxi, Inner Mongolia, Hubei, Hunan, Henan, Heilongjiang, Jiangxi, and Shaanxi. The municipalities include Beijing, Shanghai, and Chongqing. The autonomous regions include Xinjiang, Tibet, and Inner Mongolia. The cities include Hangzhou, Nanjing, and others.

In 2016, the company has established service areas in 17 provinces, municipalities, autonomous regions, and cities. The provinces include Beijing, Henan, Shandong, Jiangsu, Zhejiang, Guangdong, Guangxi, Sichuan, Shaanxi, Shanxi, Inner Mongolia, Hubei, Hunan, Henan, Heilongjiang, Jiangxi, and Shaanxi. The municipalities include Beijing, Shanghai, and Chongqing. The autonomous regions include Xinjiang, Tibet, and Inner Mongolia. The cities include Hangzhou, Nanjing, and others.

Pilnības flūdiņa
Cēpait

2016

I 2016, ecl pā acie p dēf i ad d i a c p e a i i o g - p e e d a n f a l c e c i o c i, a g a e i c e a d b i d o l a e i a . I e f e d f i x - p e e d a c i o c i, ecl p ā c a v e d i a e r c c p e a i i a e c i a r a d e c i o a i o g a i B e i J a o U i e n i, E a C h a J a o U i e n i a d e e c e g e a d i e i e i; a d d i t i e a b i e d a e r c c p e a i i e a i i p i C i e e e c i c a d e e d i a c a - e a e d e e p r e i i o p l e C i a o p e e d a d e e p l e i o f a l c e c i o c i e d, ecl p ā c a v e d i a e r c c p e a i i a e c a e c p a e l c a F i i, M e i, S i a d o H - p e e d G, p a d T a o J o R a o R a o C I p ā a c i e a e p a d l e i c f a l c e i e l e a d c i o c i i f i a g a e i c e f e d, ecl p ā a c i e c a v e d i c p e a i i o B R I C S N e D e e p l e B a i, C i a G e l l e a d E e p i e C p e a i i e l e F i d a d E e b o S e c i e i i a e i e l e a d f i a g e i d e a d e i p c l p e e b i e c a i l e c p e a i i o p p e i c a v e d i i i a p e c d e e p e e c p e a i i o a a i e f i p p e i p d c d e e p l e, e c o r c a i a i, p d c p l i a i, e i c e i e g a i i f l a i a i a d i e a p e c a c i e e a a l i i i - i i a i a d a e a i o i 2016, i o e d a e r c p c e l e f a l e i a e e l e i a a f 129, p p e i p d e a o g a a e e f p e c i a i. A e a l e i e, e a c i e e e e e e i p p c a l a a e i i d e l a a e f a p p c a a e b a i c e i e l e, a d c a l i i e e e e i p d c a i, a f e,

129

1 2016

2 2016

1059
47

3 2016

12118

2364

Construction Projects Completed

2016

ppp

ppp

1 2016 10 5

2 2016 11 5

In 2016, CREC completed projects in the field of road and bridge construction. The projects include the construction of the Gaoji-Guocun Expressway, the construction of the Sanyang-Yangji Expressway, the construction of the Beijing-Tianjin-Hebei Expressway, and the construction of the Beijing-Hangzhou Expressway. In addition, CREC completed the construction of the Beijing-Tianjin-Hebei Expressway, the Beijing-Hangzhou Expressway, the Beijing-Tianjin-Hebei Expressway, and the Beijing-Hangzhou Expressway.

Item 1: On October 5, 2016, the Africa Expressway, Add Ababa-Diblo, was completed by CREC. The Add Ababa-Diblo Expressway is a major project in Ethiopia. It is a 110-kilometer-long expressway that will significantly improve the road transportation conditions in Ethiopia. The project is a PPP project. CREC is the contractor, and the Ethiopian government is the investor. The project was completed on October 5, 2016.

Item 2: On November 5, 2016, the China-Central Asia-Europe Expressway Leader Station, the Huiyuan Railway Station, and the Huiyuan Railway Station were completed by CREC. The Huiyuan Railway Station is a major project in the Huiyuan Railway Station. It is a 110-kilometer-long expressway that will significantly improve the road transportation conditions in Ethiopia. The project is a PPP project. CREC is the contractor, and the Ethiopian government is the investor. The project was completed on November 5, 2016.



Gaba Deep

Gaba Service

Gaba Public Welfare





118



Gaba De e p e

	"	"
2016		275.6
2016		83
	463	
30		20

O e e ea ,CREC a a a ad eed " " a e e , a d a c i e p a g p a e d i e b a f a c , e c . A p e e , e c l p a i e a a b i e a b e e i e d i f e e e e e e e c a c i e d e e c i a c i e l a a f a c i e e a i e l e , e c e d e p e , a b e p a d i e a a a d e b i e , a d e e a p e c c e a a , e a , b i d e , e , e c i c i a b a , l i g p a e e e e a d e e d .

I 2016, CREC a c i e e d i e e a b i e i c l e f RMB 27.56 b i Y a .

A f e e d f 2016, CREC a e p e e a i i 83 c i e c a i b i e , a d i a 463 e e a c i c i p e c i l e e e a l a e p e a p c e , e e i l p e a i f e e a l a a g e e a e e , a c i a e d a l b e f e e a l a e i d i c i e c a a c e i c , c a e W e A f i c a l a e e p e e d b M a a d G a a , e E a A f i c a l a e e p e e d b E i p a a d T a a a , e S . A f i c a l a e e p e e d b A e a , e S . e a A i a l a e e p e e d b M a a a a d V e a l , e S . P a c i f i c a e e p e e d b P a p a N e G i e a a d F i , C e a A i a l a e e p e e d b T a a a , U b e a .

T e c l p a l a d e f i e f l a f a c i a d a a g e c i d a e e a a " " p e c i l p e a i a d i e e e p e a d p d c e p i e e d i c a . T e e p f a i p e f a a i c i e e a c e d a d l a f a c i e d b e c l p a a c e e d l e a 30 c i e a d e e i c d e N A l e i c a , S e a A i a , e M i d d e E a , a d A f i c a ; e a c c l a e d e p i f e e b i d e e a c e d 200,000 . T e e d e e p e l a a f a c i e d b e c l p a a b e e e p e d M a a a , l a e a d e c i e . T e p e a p a a d a l a a d d i b i e e p e f i e p e e d a e e a d i e e l a e c l p a e d i d e p e d e e e c a p p e e a e a b e e e p e d l a , G e l a , H e K e l d a , e U e d A a b E i a e a d e c i e a d e e .

EPC+F

" "

" "

80%

" "

15.5



2016 " " 2 20

3 2016 " " 100

1 2016 3

18 9
529 11 16



Global Public Welfare

CREC has led the idea of "fostering talents" and placed a high priority on the "talent" project in 2016. In order to carry out the "talent" project, UBEA has set up the "Talent" project in Addis Ababa-Dibella, which is a good example of the company's social responsibility and the company's contribution to the local community.

The company has provided a total of 100,000 Yuan for the "talent" project in Addis Ababa-Dibella. The company has also provided a total of 100,000 Yuan for the "talent" project in Addis Ababa-Dibella. The company has also provided a total of 100,000 Yuan for the "talent" project in Addis Ababa-Dibella.

In March 2016, the company has provided a total of 100,000 Yuan for the "talent" project in Addis Ababa-Dibella. The company has also provided a total of 100,000 Yuan for the "talent" project in Addis Ababa-Dibella. The company has also provided a total of 100,000 Yuan for the "talent" project in Addis Ababa-Dibella.

In February 2016, the company has provided a total of 200,000 Yuan for the "talent" project in Addis Ababa-Dibella. The company has also provided a total of 200,000 Yuan for the "talent" project in Addis Ababa-Dibella. The company has also provided a total of 200,000 Yuan for the "talent" project in Addis Ababa-Dibella.

In March 2016, the company has provided a total of 100,000 Yuan for the "talent" project in Addis Ababa-Dibella. The company has also provided a total of 100,000 Yuan for the "talent" project in Addis Ababa-Dibella. The company has also provided a total of 100,000 Yuan for the "talent" project in Addis Ababa-Dibella.

Open CREC

Nilavelflav Dc e

2016	"	"	303	125	H
A					
178					
"	PPP				
2015					
A					

In 2016, the company continued to carry out the capital and
 effective management and effective management of the
 company's business and management. The company's business
 and management in 2016 is summarized in the following
 table:

The company's business and management in 2016 is summarized in the following
 table:

The company's business and management in 2016 is summarized in the following
 table:





2016 IR E 100 200 180
 180 180 180
 50
 100
 " " 4 2
 2 12 100 300 300
 2312 120 A80
 9023 31 261
 13
 67 756 AH AH AH 50
 50 100
 MSCI A
 A50
 50 180



Halaman | Media Relations

Oleh karena itu, CRECI telah melakukan berbagai kegiatan untuk meningkatkan hubungan dengan media. Tim yang terdiri dari pejabat senior telah melakukan perjalanan ke berbagai lokasi untuk memberikan informasi yang akurat dan tepat waktu kepada media, serta memberikan pelatihan kepada jurnalis dan staf media lainnya. Selain itu, CRECI telah melakukan berbagai kegiatan untuk meningkatkan hubungan dengan media, seperti menghadiri konferensi pers, memberikan wawancara, dan berpartisipasi dalam berbagai acara media lainnya.

Dalam 2016, Xinhua News Agency, CCTV, People's Daily, Guangming Daily, Economic Daily, Science and Technology Journal, China Securities, South China Securities, Securities Daily, Securities Times, Xinhua News, People's TV adalah media yang telah melakukan lebih dari 100,000 pertemuan dengan kami.

2016

100000



C a a c e n t r c C o p a e M e d a

2016

" " 500 "

In 2016, the company received 11 awards and honors from various media. It was ranked 500 in the "China's Top 500 Enterprises" list. The company was also featured in several major media outlets, including CCTV, Global Times, and the New York Times.

2016

In 2016, the company's achievements were widely reported by CCTV, Global Times, and other major media outlets. The company was featured in several major media outlets, including CCTV, Global Times, and the New York Times.



2016		500	57	<p>In 2016, we completed N.57, "F...e" G ba 500 C I p...e, N.2, "E...ee, Ne Rec d(ENR)" 250 G ba La...e E...ee, C...ac , N.20, 50 G ba La...e I...e a...a E...ee, C...ac , N.296, T p500 W d B a d .I add... , a...e be...e ea...l a...e b...e a...a d... Ce...a a d Ea...e E...pe, p20, be...e pac...ce f b a d f...pe... f...ed c l p...e, T a l a A a d-...e Be B a d f D ec... , T e ce J a D a l...d A a d, e Be B a d f D ec... , T p100 O ea P e f l a cea d l a...e a a d.</p>
	ENR	250		
2	250	20		
500	296			
		20	—	
100				
2016	1		7	<p>In 2016, we completed CREC...e Na...a Ma 1 Lab Ce...fca e f Me... , 7 c...e...e...e f Na...a W...e R...ee, 20 c...e...e...e a a d e d "L c l...i...e C...p...l...3 c...e...e...e a a d e d Na...a "A...a...C...p...C...e W...i...C...e...e,</p>
		20		
13	" "	" "	24	
	1			
7		161		
"			"	
" "		"	"	

2016

Top Ten Social Responsibility Practices, 2016

Blank area for drawing or image.

Name of Social Responsibility Practice	Implementation Unit
Bidrag til bæredygtig udvikling	CREC
Arbejdsplacens tilrettelæggelse	CREC
Flere medarbejdere i sundhed	CREC, bidrag til UH
Infiltation af vand i landbrugsområder	CREC N.4
Forbrug af energi og vand i Aarhus	CREC N.4
Procent af medarbejdere i sundhed	CREC N.5
Elevet andelen af medarbejdere i sundhed	CREC N.10
"Lev i det grønne" - udfordring af medarbejdere	CRCEG (Carlsberg C.A., Ege, EG, p)
Carlsberg (København) og Lille, "Carlsberg"	Carlsberg Rejser og PC, Ltd.
Teknisk affald fra fabrikken i Sydjylland	CRBBG (Carlsberg Bæredygtig PC, Ltd.)

2017

"

"

2017

Il 2017, CREC si è impegnata a migliorare la qualità della vita delle persone e a contribuire allo sviluppo sostenibile. In questo anno, abbiamo investito in progetti di comunità e in iniziative di responsabilità sociale. Il nostro impegno è di creare valore per tutti, rispettando l'ambiente e promuovendo la crescita economica. Insieme, possiamo costruire un futuro migliore per tutti.

Il 2017, CREC si è impegnata a migliorare la qualità della vita delle persone e a contribuire allo sviluppo sostenibile. In questo anno, abbiamo investito in progetti di comunità e in iniziative di responsabilità sociale. Il nostro impegno è di creare valore per tutti, rispettando l'ambiente e promuovendo la crescita economica. Insieme, possiamo costruire un futuro migliore per tutti.



2016

69

010-51878413 100039
010-51878417 @c.ec.c
.c.ec.c

Read Feedback

Ta f ead e ga ep b ep f 2016 C a Ra a G pL ed
b c ed e.

T ee a e i a be fa a d l i i c l p e p e a p ce f e ep . We a e
e i e c l l e a d e e . We e p e e a f
p a d e p e c l p a ce a .

Adde : C a Ra a G pL ed B d 69 F R ad, Hada D ic, Be
Teep e: 010-51878413 P ac de: 100039
Fa : 010-51878417 El a : @c.ec.c
Web e: .c.ec.c

A e e ed. If eed a p e , p e c ac , e e e a ed.



A 601390 H 0390

S c c de 601390SH 0390HK



本报告以环保纸张印制
T e o . D . m i . l e a p e . d m .